

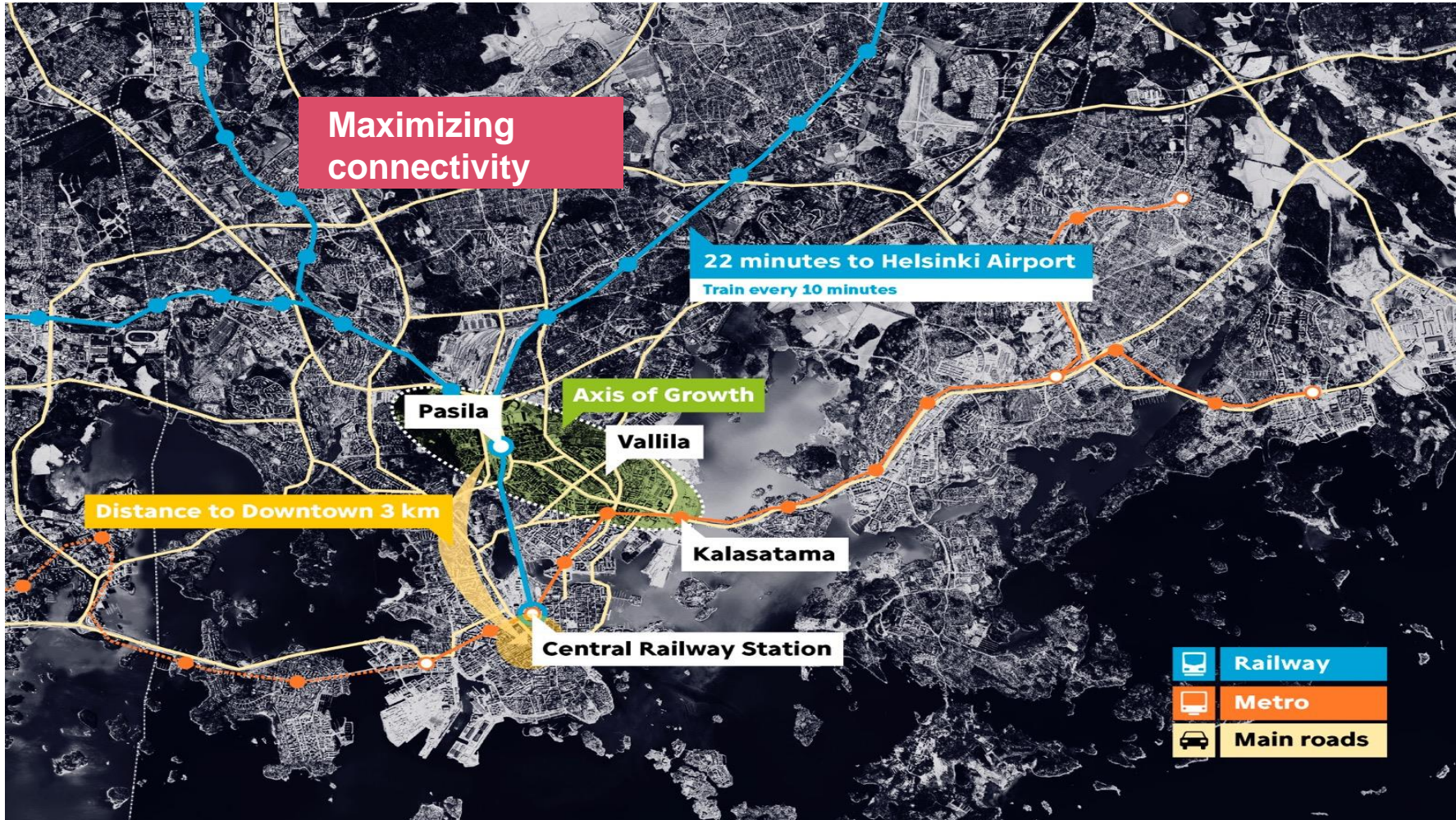


## Case Tripla

TAPIO SALO, SVP, TRIPLA PROJECT



# Location, location, location



## MAXIMISING CONNECTIVITY

- 1.7 million consumers
- 50 million users
- 900 trains
- 800 busses
- 500 trams
- Helsinki Focus Area

## PASILA YEAR 2030

- 50,000 workplaces
- 30,000 inhabitants



# Developing the Pasila area in Helsinki

2013



2025





Office, Workery East  
Completed Q1/2020

Office, Workery West  
Completed Q1/2020

Office, Workery East  
Completed Q1/2020

Housing  
Completed Q1-Q3/2020

Hotel, Exilion  
SOLD 100% 6/2017  
Completed Q1/2020

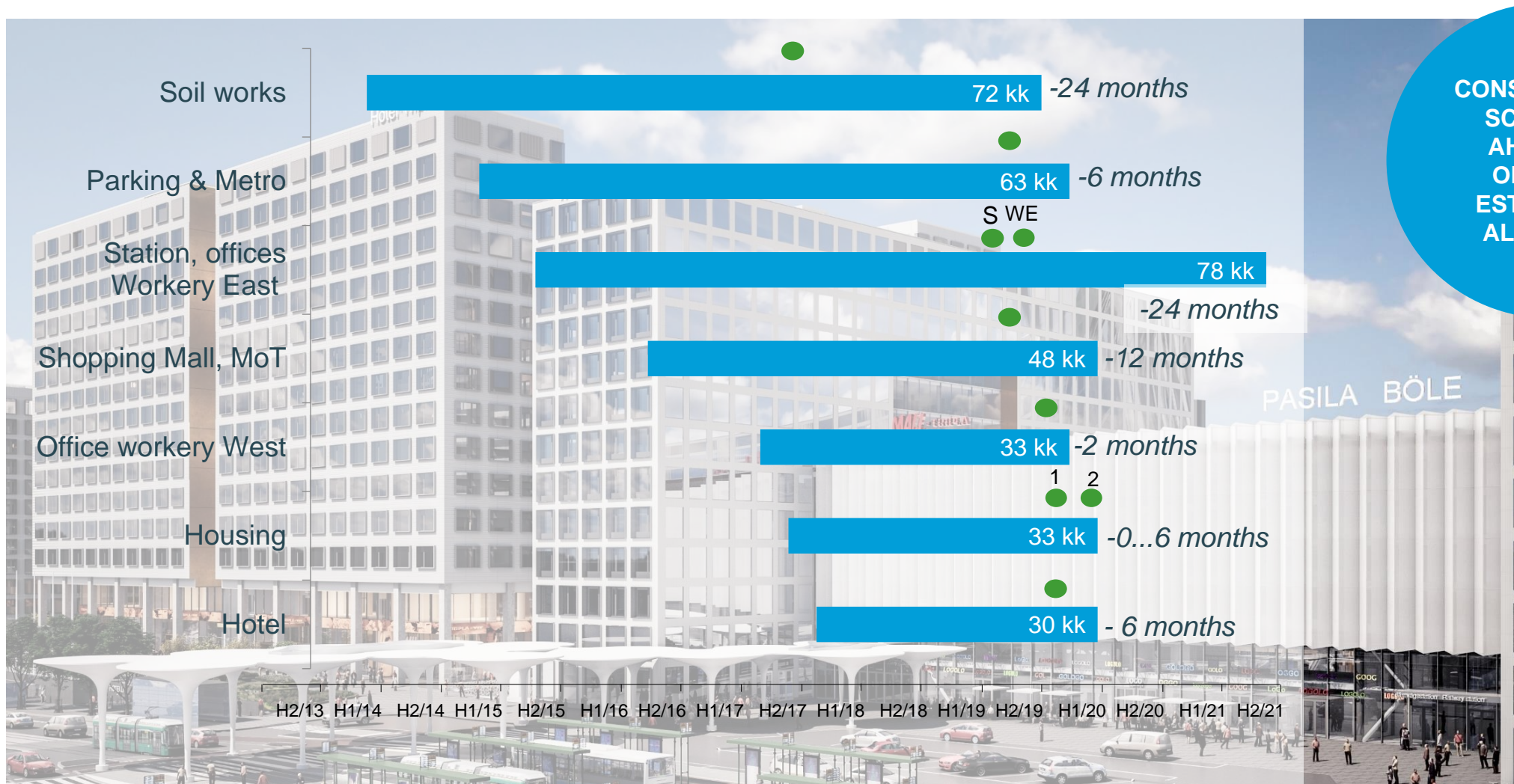
Pasila Station (Mall of Tripla)  
SOLD 61.25% 6/2016  
Opening Q4/2019

Mall of Tripla and Parking  
JV –company  
Ilmarinen, YIT, Conficap, Fennia  
SOLD 61.25% 6/2016  
Opening Q4/2019





# Construction schedule, 2014 estimate



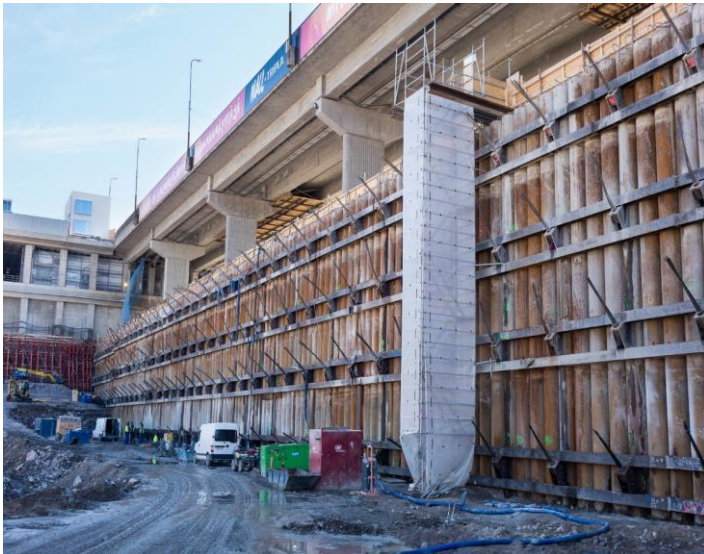
**CONSTRUCTION SCHEDULE AHEAD OF ORIGINAL ESTIMATE IN ALL AREAS**

● Actual schedule

# Facts and figures

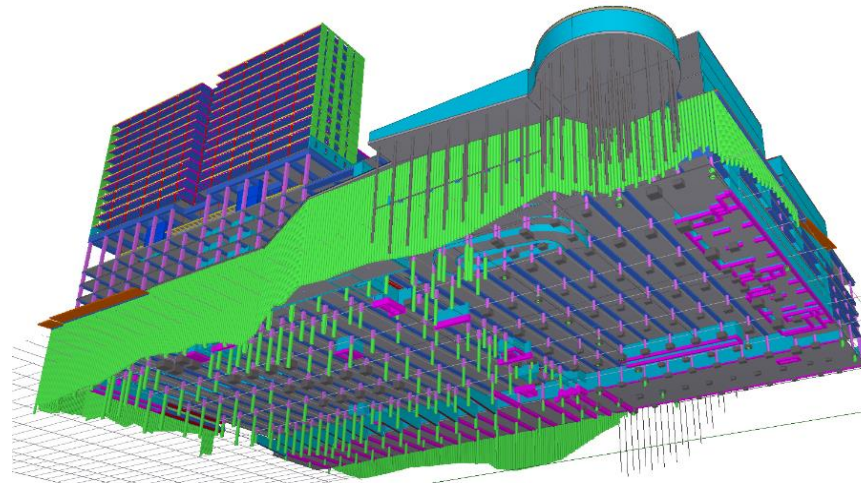
## TRIPLA PROJECT

- Total cost estimate EUR 1.1 billion
- Total construction time 6 years
- Divided into 30 sub projects



## SIZE

- Total area equivalent to 50 football fields
- Total capacity equivalent to world's biggest cruise ship
- From foundations to the roof 90 metres



## AT THE SITE

- 1,200 daily workers
- 1,000,000 tonnes of removed soil
- 170,000 m<sup>3</sup> of concrete
- 27,000 tonnes of steel
- 2,300 window boxes
- 24,000 concrete prefabricates
- Over 5,000 sq.m. of site cabins

